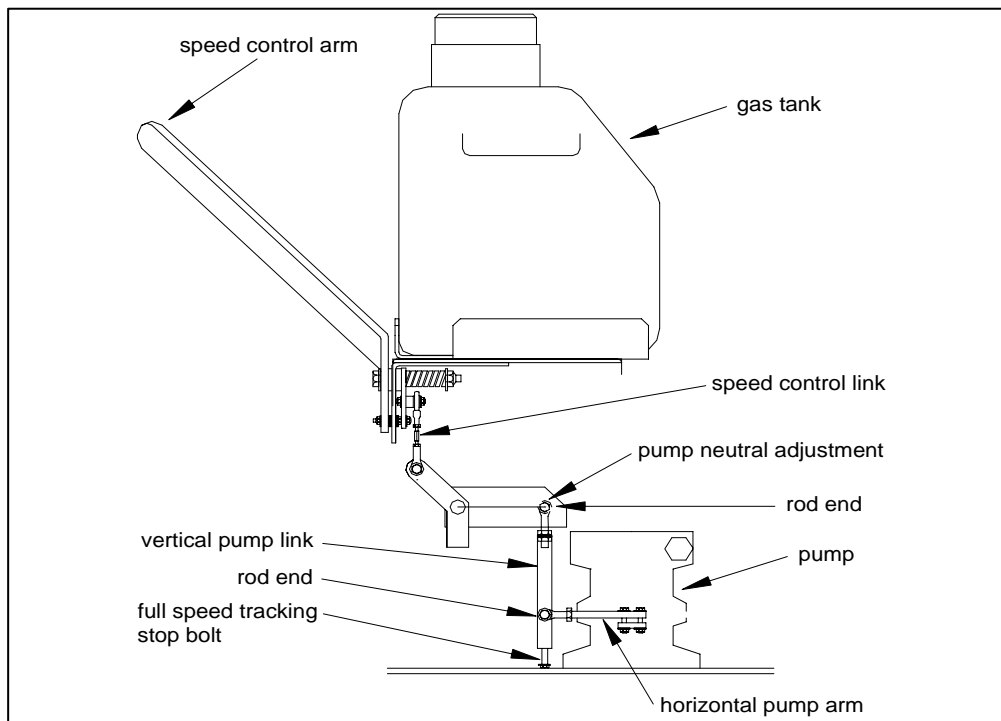


Hydro Set-Up and Adjustments

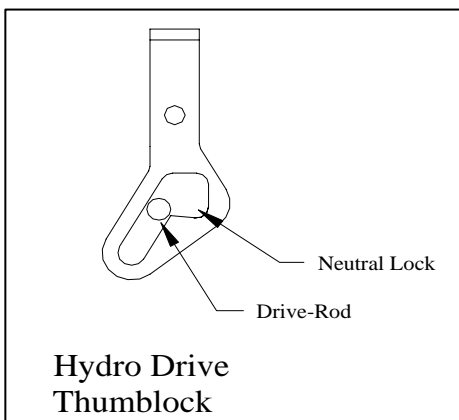
for Encore Hydro Walk-Behinds

Begin the hydro set-up by neutralizing out the hydro pumps. This is done by raising the drivewheels off the ground so that they may free wheel. Block the unit up securely so that you may run the engine with no danger of it falling from the stand.

1. With the speed control arm in the neutral position, start the engine and run it at 3/4 to full throttle.
2. Adjust the speed control link until at least one drivewheel stops turning. Then tighten the locking nuts into place on the speed control link.
3. If one drivewheel continues to spin, the pump arm on the pump for that drivewheel will require an adjustment. With 1/2" wrench, break the lock nut loose on the top of the vertical pump link and adjust the rod end until the horizontal pump arm is set to neutral position.



4. After accomplishing setting neutral, shut the engine off and remove the support blocks from under the machine. With the engine shut off, take the drive rods and bolt them onto the main control shaft using 5/16 nyloc nuts. Adjust the length of the rod so that the pins in the drive levers are just a little under center of the neutral lock on the thumb lock (refer to thumb lock diagram).



5. Test the full speed tracking by running the unit at full throttle and setting the speed control lever to the full speed setting. The test run should be made on a hard smooth level surface. If the machine pulls one way at full speed, shorten the slow side "stop bolt" to increase the speed of the slow side.
6. If there cannot be enough adjustment made to the slow side, then the "stop bolt" on the fast side may have to be lengthened.
7. If yet more adjustment is required, the length of the horizontal pump arm will need to be altered. To increase pump speed, shorten the arm by screwing in the rod-end. To decrease speed, lengthen the pump arm by unscrewing the rod-end. Usually, about two full turns on the pump arm rod-end to speed up or slow down is adequate.