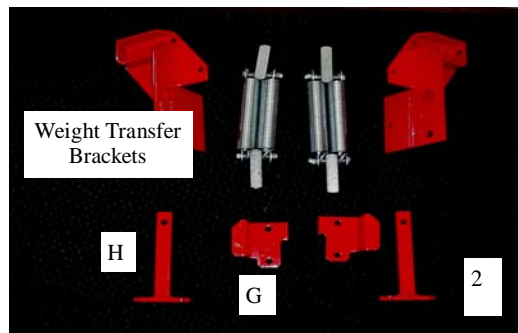
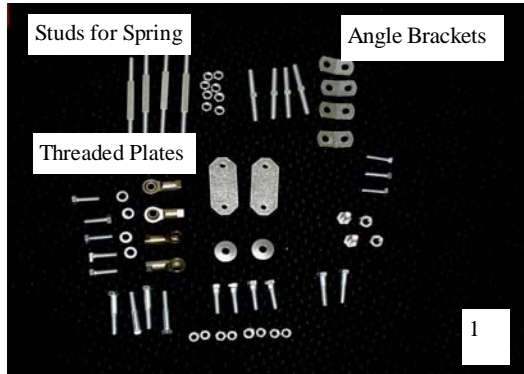




FC Weight Transfer Kit (part # 151010)

Installation Instructions



Begin by laying out all hardware (Fig. 1 & 2). The size of deck will determine which spring studs are to be used for installation:

4 short studs for a 52" deck

2 short studs & 2 long studs for a 61" deck

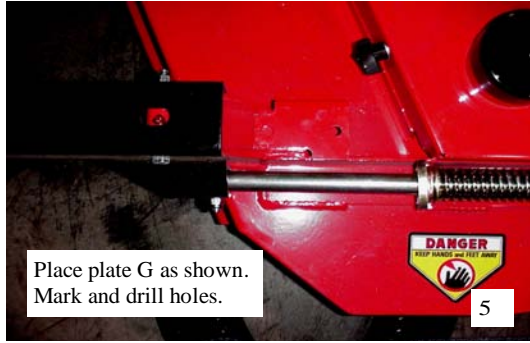
4 long studs for a 72" deck

Install one 3/8-24 hex jam nut to each end of each spring stud. Also attach one rod end to each spring stud. Attach studs to spring assy as shown in Fig. 3.



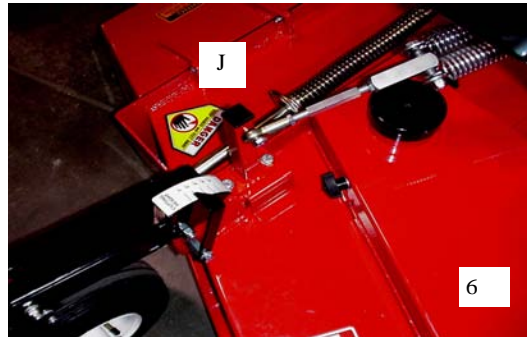
Referring to Fig. 4, remove bolts as indicated by items E & F.

Attach weight transfer brackets (shown in Fig. 2) to front panel (shown in Fig. 4, item E) to corresponding RH or LH side of machine using 5/16x1 1/4 HHCS included in bolt bag.



Place plate G as shown.
Mark and drill holes.

Now place RH and LH riser supports (Fig. 2, item G) on top of corresponding deck support tubes as shown in Fig. 5. Using bracket as a guide, mark and drill 11/32 holes into deck support tubes.



Install weight transfer riser (Fig. 2, item H) using threaded plate, 3/8x1 1/4 HHCS, & 3/8 lockwasher. Place riser on top of riser support plate and bolt from top down through riser, riser support plate, deck support tube, and into threaded plate as shown in Fig. 6.

Attach spring assy to weight transfer riser using 3/8x1 3/4 HHCS provided in kit (Fig. 6, item J).



Using 3/8x2 1/4 HHCS provided in kit, attach opposite end of spring assy to weight transfer bracket that was mounted earlier to the front panel of the seat frame.

The spring studs are RH threaded on both ends. Therefore, the tension must be adjusted prior to attaching the rod ends to the mounting brackets at both ends of the spring assy.

Angle brackets (Fig. 1) must be used when attaching spring assy's to a 72" deck to maintain alignment.