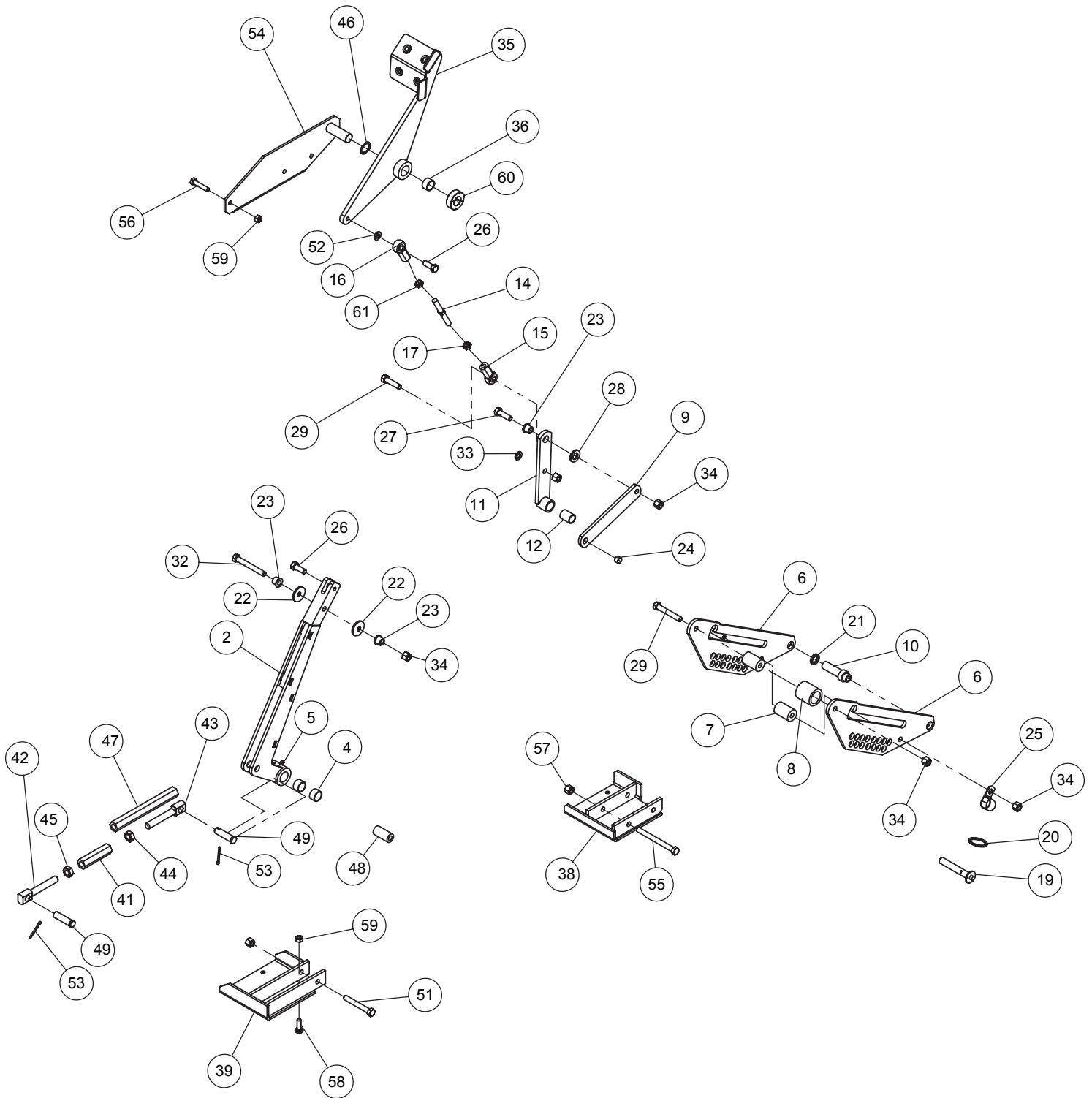


# FOOT LIFT PARTS 61 / 72 PROWLER MC



**FOOT LIFT PARTS  
61 / 72 PROWLER MC**

<u>ITEM NO.</u>	<u>PART #</u>	<u>DESCRIPTION</u>	<u>QTY.</u>
1			
2	592117	LIFT ARM W/BUSHING	1
2A	592116	72 LIFT ARM WELDMENT	1
4	363089	BRONZE BUSHINGS	2
5	111004	1/4-28 ZERK	1
6	593138	CUTTING HEIGHT PLATE	2
7	593140	HEIGHT PLATE SPACER	2
8	593155	SPACER GRIP	1
9	593146	UPPER SCISSOR ARM	1
10	593160	HEIGHT PLATE PIVOT	1
11	592086	LOWER SCISSOR ARM W/ BUSHING	1
11A	592082	LOWER SCISSOR ARM	1
12	253059	ENGAGEMENT BUSHING	1
14	343158	FOOT PEDAL LINK	1
15	593163	ROD END RHF 3/8	1
16	593164	ROD END LHF 3/8	1
17	104754	3/8-24 Hex Jam Nut	1
19	109036	1/2 X 2 BALL LOCK PIN	1
20	109002	1-1/2 O.D. SPLIT RING	1
21	363087	TRANSMISSION SHAFT SPACER	1
22	753027	DISC SPRING WASHER	2
23	123044	PIN BUSHING	3
24	363174	EYE BOLT SPACER	1
25	603031	DRAIN CLAMP	1
26	100292	3/8-16 X 1 HHCS	1
27	100293	3/8-16 X 1-1/4 HHCS	1
28	593174	9/16 PLASTIC WASHER	1
29	100294	3/8-16 X 1-1/2 HHCS	1
31	100299	3/8-16 X 2-3/4 HHCS	1
32	100300	3/8-16 X 3 HHCS	1
33	105006	3/8 LOCK WASHER	1
34	104257	3/8-16 NYLOC NUT	5
35	592085	FOOT LIFT PEDAL W/ BUSHINGS	1
35A	592084	FOOT LIFT PEDAL WELDM'T	1
36	363089	BRONZE BUSHING	2
38	592080	FRONT HEIGHT MOUNT WELDM'T	1
39	592078	REAR LIFT MOUNT WELDMENT	1
41*	593168	.50 TURNBUCKLE (*61 DECK)	1
42	593170	.50 RH ROD EYE	1
43	593172	.50 LH ROD EYE	1
44	109038	1/2-20 LH Hex Jam Nut	1
45	104755	1/2-20 HEX JAM NUT	1
46	593161	WAVEY WASHER - 3/4	1
47**	593226	72 MC .50 TURNBCKLE(**72 DECK)	1
48	593150	LIFT ARM PIVOT BUSHING	1
49	593165	CLEVIS PIN - 1/2 X 1 1/2	2
51	100299	3/8-16 X 2-3/4 HHCS	1
52	105006	3/8 LOCK WASHER	1
53	106763	1/2 x 1 1/4 Cotter Pin	2
54	592074	PEDAL MOUNT WELDMENT	1
55	100303	3/8-16 X 4 HHCS	1
56	100275	5/16-18 X 1-1/2 HHCS	1
57	104257	3/8-16 NYLOC NUT	2
58	107509	5/16-18 x 1 Carr. Bolt	1
59	104256	5/16-18 NYLOC NUT	2
60	523138	3/4 CLAMP COLLAR	1
61	109037	3/8 - 24 HEX LH JAM NUT	1