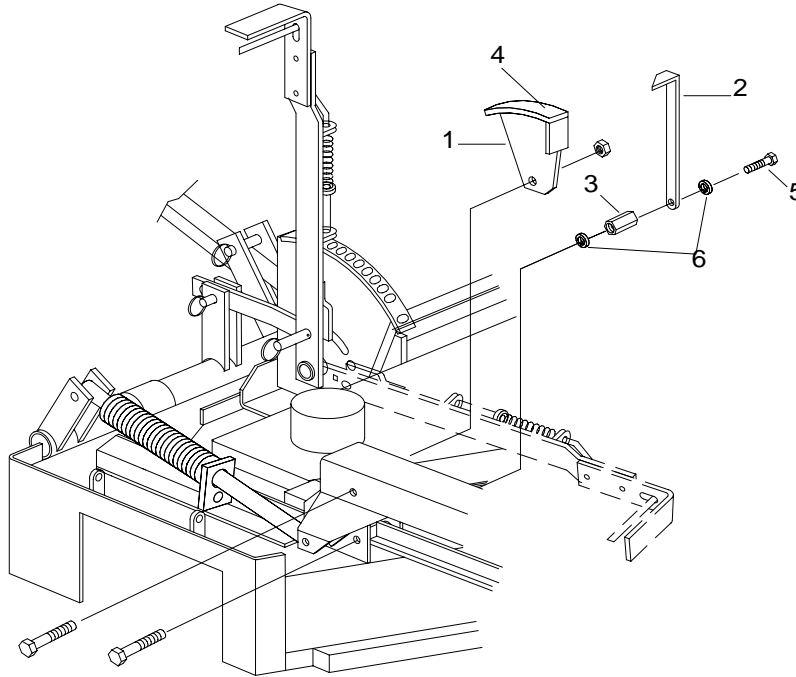




Cut Gage Kit

(part # 582212)

Installation Instructions



- 1) Install Cut Gage Wldmt w/ decal onto RH Caster Arm using existing bolt and nut.
- 2) Using the existing bolt on the Caster Bar Wldmt, remove the nyloc nut and replace with one 3/8" lockwasher and Pointer Gage Nut.
- 3) Install the Pointer Gage, the other 3/8" lockwasher, and the 3/8"-16 x 3/4" HHCS.
- 4) Set Deck Lift Lever in lowest mowing position with unit setting on a level surface. With blades pointing towards front of deck, measure from ground to blade tip to get cutting height. Loosen bolt on pointer and adjust pointer to height measured.

Parts List

#	Part #	Qty	Description
1	582176	1	Cut Gage Wldmt
2	583420	1	Pointer - Cut Gage
3	583422	1	Nut - Cut Gage
4	583416	1	Gage Decal
5	100291	1	3/8"-16x3/4" HHCS
6	105006	2	3/8" Lockwasher